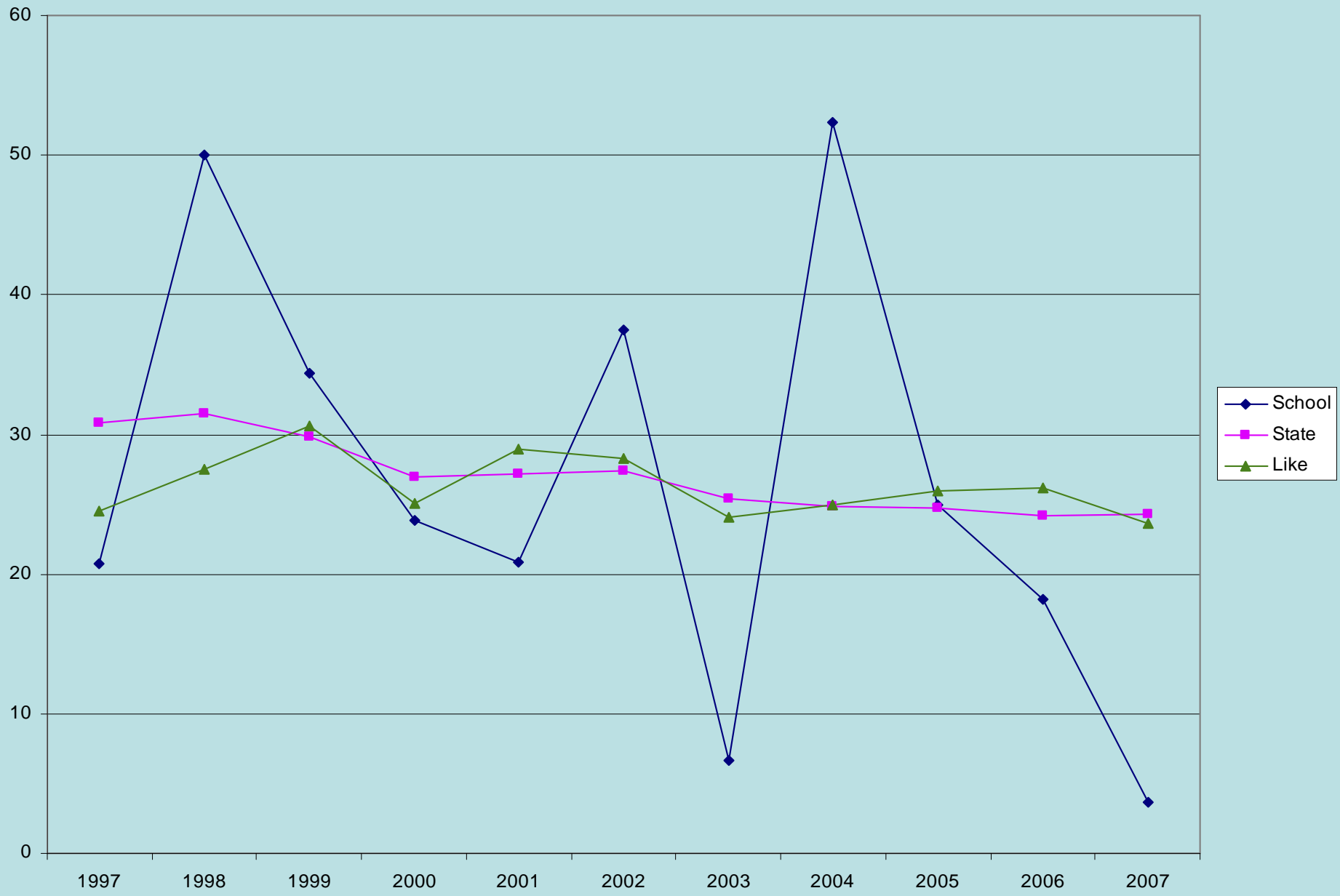


Kingsthorpe State School

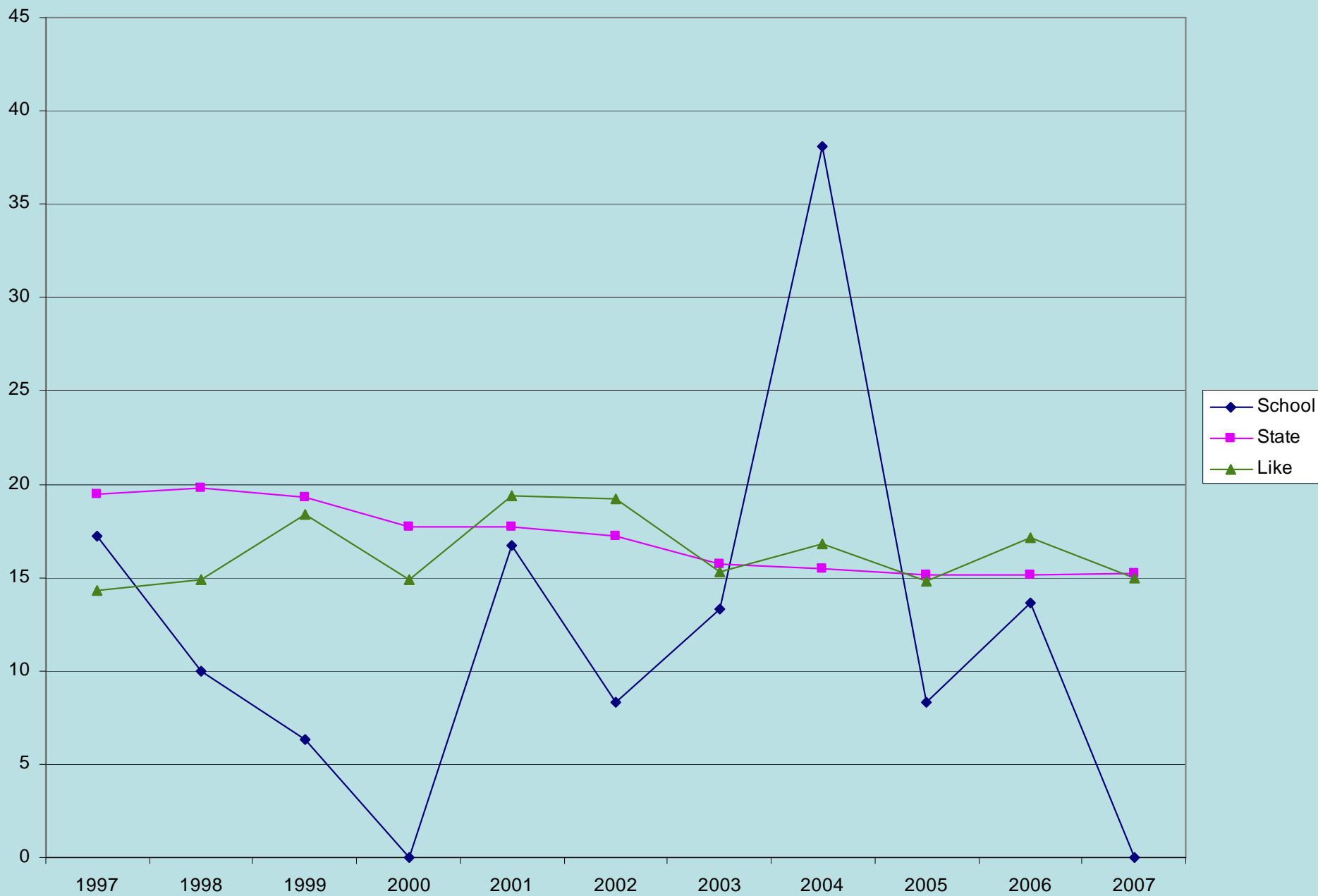


- **Percentage of Year 2 Students**
 - **Requiring Extra Support**
 - **1997 - 2007**

Percentage of Year 2 Students Requiring Additional Support in Reading



Percentage of Year 2 Students Requiring Additional Support in Writing



Percentage of Year 2 Students Requiring Additional Support in Number

